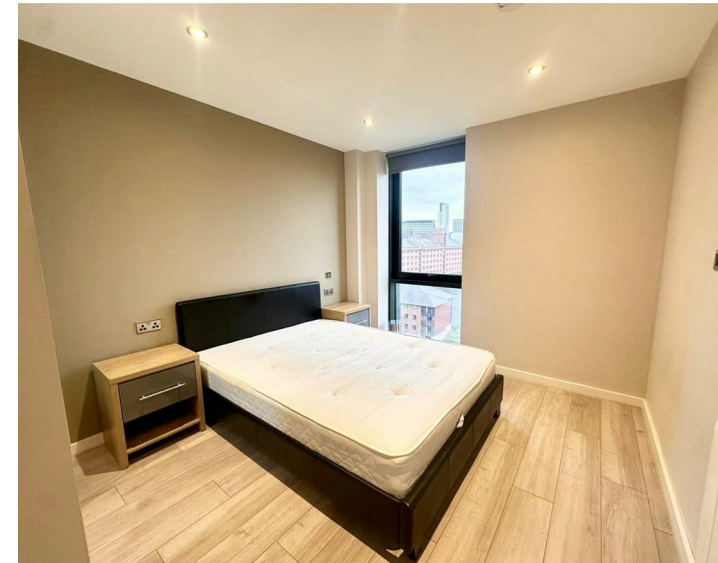




Apt 803, 11, Park Central Jesse Hartley Way, Liverpool, L3
£1,050 Per Month

www.
cityresidential
.co.uk



About the Property

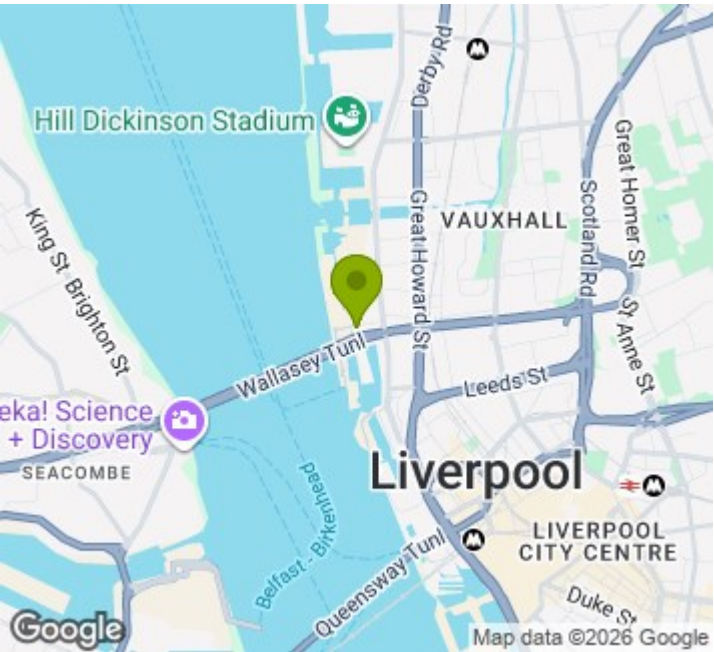
A modern two-bedroom, two-bathroom apartment located on the 8th floor of the popular Park Central development. The property offers well-proportioned accommodation with an open-plan living and dining area and a fitted kitchen.

The apartment comprises two double bedrooms, including a principal bedroom with en-suite shower room, and a separate contemporary main bathroom. Finished to a modern standard throughout, the property is ideal for professional sharers or couples seeking city living in a well-connected location.

Situated within close proximity to Liverpool city centre, the waterfront, and major transport links. No parking included.

Call us now on 0151 231 6100 to arrange a viewing!

- EPC - B
- Council Tax Band - C
- Deposit - £1211
- Available Now



Energy Efficiency Rating

	Current	Potential
Very energy efficient - lower running costs		
(92 plus) A		
(81-91) B	83	83
(69-80) C		
(55-68) D		
(39-54) E		
(21-38) F		
(1-20) G		
Not energy efficient - higher running costs		
England & Wales	EU Directive 2002/91/EC	



City Residential
81/87 Victoria Street, The Old Haymarket, Liverpool L1 6DG
T: 0151 231 6100 F: 0151 231 6105
E: sales@cityresidential.co.uk



WWW.
cityresidential
.co.uk